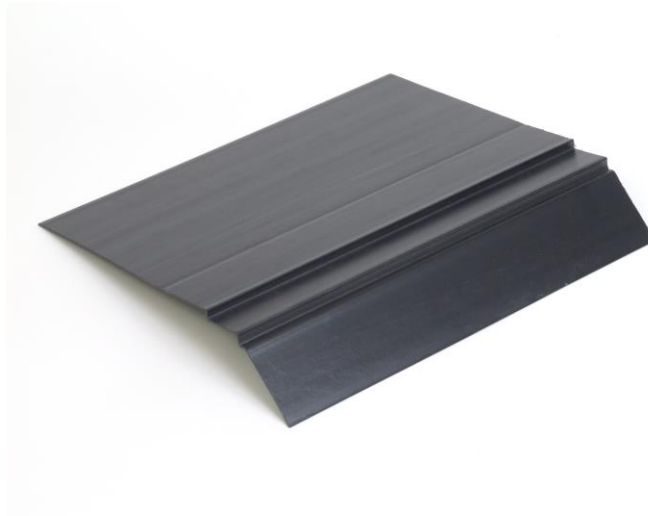




**THYSIS**  
Building Products



## Technical Data Sheet

### Eaves Protection Board

The most cost effective and simple way to provide a complete felt support system that will not deteriorate, giving additional protection to the fascia detail of all roof types, suitable for use with all slates and tiles. To prevent the underlay sagging at the eaves and forming a water trap behind the fascia, it is recommended that the underlay is supported by a continuous fillet.

#### Product features:

- Quick and easy to install
- Lightweight and durable
- New build and re-roofing applications
- Suitable for all slates and tiles
- 1500mm long
- Provides support to felt to avoid 'ponding' behind fascia

Material	Recycled PVC
Overall length:	1500mm
Thickness:	1.2 mm
Overhang:	48mm
Width:	165mm